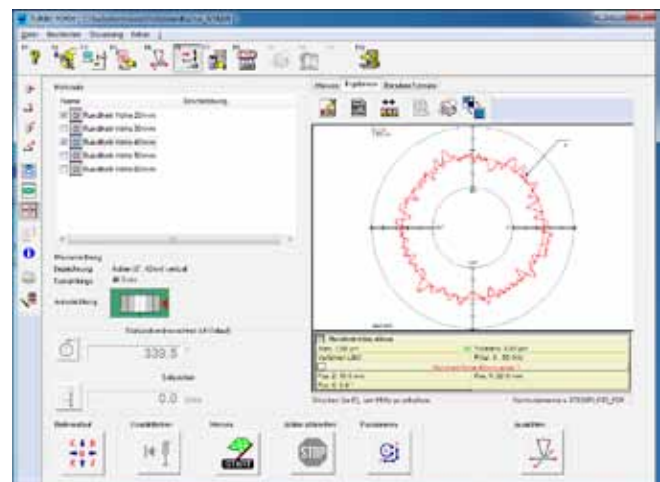
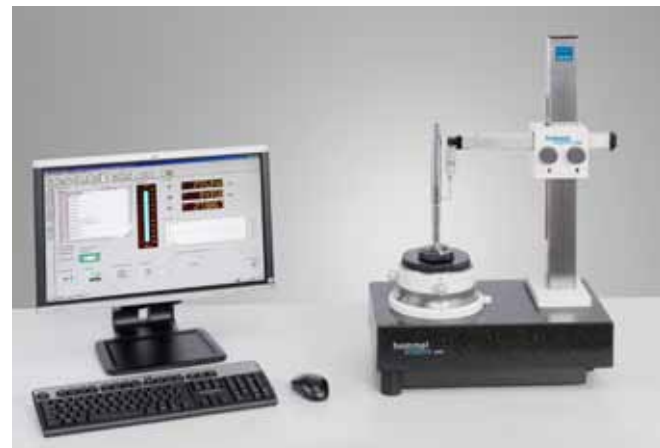


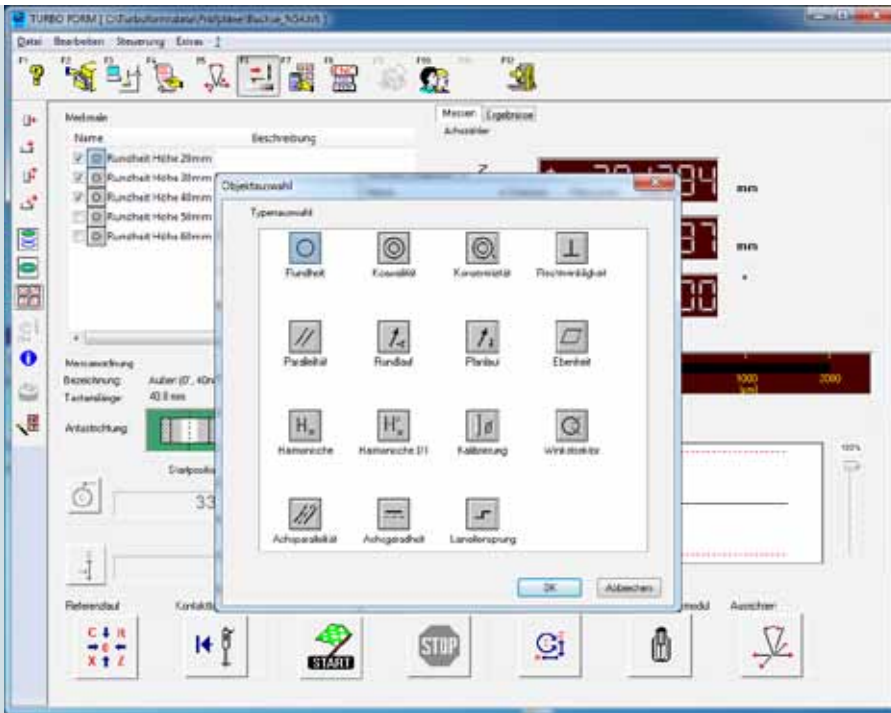


HOMMEL-ETAMIC F50 Fast and easy roundness measurement

- NEW - easy to use TURBO FORM software for fast and efficient measurements
- High measuring accuracy in the lab and on the shopfloor
- Menu guided, manual centering and leveling
- Maintenance-free, air mounted rotational axis
- Extensive range of accessories for numerous applications



Precision is our business.



Parameters:

- Roundness
- Radial runout
- Axial runout
- Flatness
- (from one polar measurement)
- H_v , H_f (Fourier/FFT)
- Coaxiality
- Concentricity
- Parallelism
- (from two polar measurements)
- Axial parallelism
- (polar to reference system)
- Axial straightness
- Perpendicularity
- (polar to reference system)
- Angle sector (optional)
- Laminar jump (optional)

Roundness measurement - as simple as that:

- All important functions in one view
 - Alignment
 - Attribute setting
 - Measuring
 - Evaluation
- Fast performance of manual measurements
- Intuitive operation via comprehensive icons
- Matching of parameters or measuring points with specific evaluation forms

With the new software you enhance:

- your productivity and
- your ease of use

Technical data HOMMEL-ETAMIC F50

Workpiece volume	
Distance C/Z axis	195 mm
Max. test diameter	300 mm
Max. measuring height	300 mm (450 mm)
Rotational axis (C axis)	
Table diameter	150 mm
Workpiece alignment	manual
Roundness error $\mu\text{m}+\mu\text{m}/\text{mm}$ measuring height	0.05+0.0005
Roundness error $\mu\text{m}+\mu\text{m}/\text{mm}$ measuring height*	0.025+0.00025
Axial runout error $\mu\text{m}+\mu\text{m}/\text{mm}$ radius	0.05+0.0005
Axial runout error $\mu\text{m}+\mu\text{m}/\text{mm}$ radius*	0.025+0.00025
Centering range	± 2 mm
Leveling range	$\pm 0.6^\circ$
Measuring speed	1-10 1/min.
Bearing	air
Max. charge	250 N
Vertical axis (Z axis)	
Travel	300 mm
Horizont axis (R axis)	
Travel	160 mm
Dimensions/Weight measuring system	
Length	475 mm (635 mm)
Width	285 mm
Height	710 mm
Weight	55 kg

All accuracy data according to ISO 1101. Roundness deviations measured with filter 0-15 W/r; 6 rpm.; LSCI. Straightness deviations measured with cut-off wavelength 2.5 mm; 100 mm/min.; LSLI. All data relate to 20°C \pm 1°C.

* Values as maximum deviation from the reference circle LSCI, filter 0-15 W/r LSCI, 6 rpm.



JENOPTIK | Industrial Metrology

HOMMEL-ETAMIC GmbH | Alte Tuttlinger Straße 20 | 78056 VS-Schwenningen

Germany | Phone +49 7720 602-0 | Fax +49 7720 602-123

E-Mail: info-de.im@jenoptik.com | www.jenoptik.com/metrology